



the best new stores

< CAROLINA GEORGE, NEW YORK CITY

Equal parts boutique and design studio, Georgia Tapert Howe and Caroline Cummings Rafferty's shop in Manhattan's Flatiron district was inspired by the ateliers of Paris. The space showcases the duo's line of stylish furniture, playful patterned fabrics, custom window treatments, and colorful home accessories.

19 W. 21st St., 212-242-2414; carolinageorge.com

V COMMUNITY & CO., LOS ANGELES

This multifunctional showroom houses new and vintage furnishings, lighting, and textiles, including pieces by acrylics master Charles Hollis Jones, Brooklyn design studio Eskayel, and others. A gallery displays the work of established and up-and-coming photographers, sculptors, and painters.

8259 Melrose Ave., 323-951-9244; communityandco.com



^ VIOLETAS, CORAL GABLES, FL

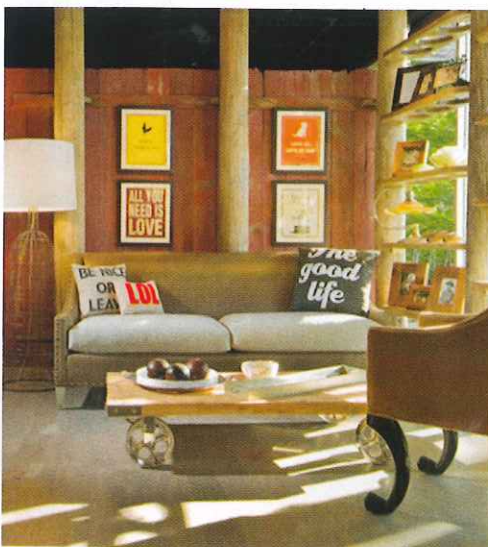
Ecuador native Patricia Anton Himmel and her daughter, Patricia Kronfle, drew from their travels around the world to open this 2,000-square-foot store. The quirkily curated boutique is packed with chic curiosities, from exotically colored antiques to cowhide rugs to artworks from Asia and Latin America. Baccarat chandeliers, Hermès tableware, linens by Le Jacquard Français, and unique jewelry are also on hand.

223A Miracle Mile, 305-381-0711; violetashome.design.com

> SUSAN FREDMAN AT HOME, WHITEFISH BAY, WI

Interior designer Susan Fredman has opened her third location, just north of Milwaukee. Clad in barn wood and using reclaimed telephone poles to impart rustic charm, the shop carries furniture, lighting, and accessories. Earthy tabletop pieces by Michael Aram, Chilwich placemats, and French ceramic dinnerware are featured, as well as a line of eco-friendly wood and upholstered pieces designed in-house.

401 E. Silver Spring Dr., 414-332-4600; susanfredmanathome.com



Now Open

• Alessi's Milan flagship, designed by Marti Guixé, houses the brand's stylish kitchen tools and appliances, home accessories, and clever gadgets. 14-16 Via Manzoni, 011-39-02-795726; alessi.com

• Bedford House, located in Bedford Hills, New York, carries elegant lighting and antique and new furniture. 17 Depot Plaza, 914-241-0415; bedfordhouse.com

• Chicago is home to Mitchell Gold + Bob Williams's newest store, offering the company's tailored furnishings. 1555 N. Halsted St., 312-397-3135; mgbwhome.com

• Ted Muehling relocates his sculptural tabletop pieces and jewelry to a new space in Manhattan's Tribeca. 52 White St., 212-431-3825; tedmuehling.com

EDITED BY ALYSSA WOLFE